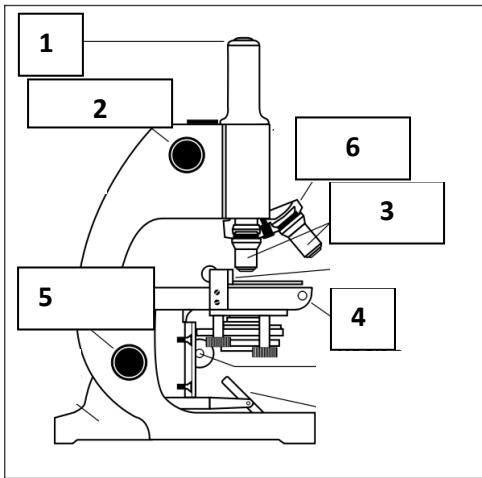


Cell Structure

Name the parts of the light microscope.



- 1.
- 2.
- 3.
- 4.
- 5.
- 6.

Describe how to make a slide of plant cells, stained and unstained.

Blank space for describing how to make a slide of plant cells, stained and unstained.

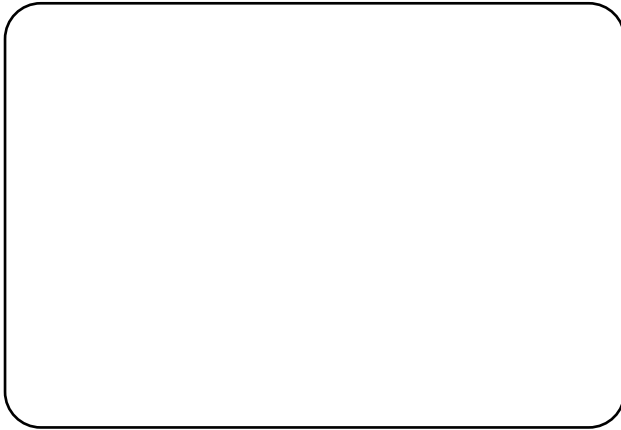
Describe how to adjust the microscope for use at low power or high power.

Blank space for describing how to adjust the microscope for use at low power or high power.

Describe how to make a slide of animal cells, stained and unstained.

Blank space for describing how to make a slide of animal cells, stained and unstained.

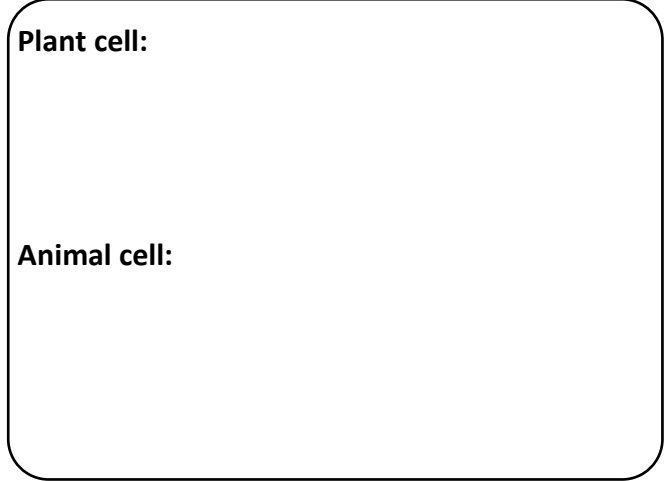
Briefly outline how an electron microscope works and what it is used for.



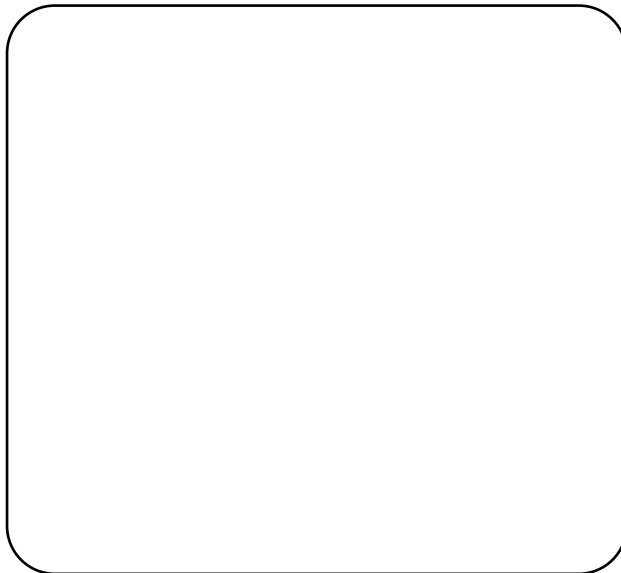
Describe the position and function of the cell membrane in plant and animal cells.

Plant cell:

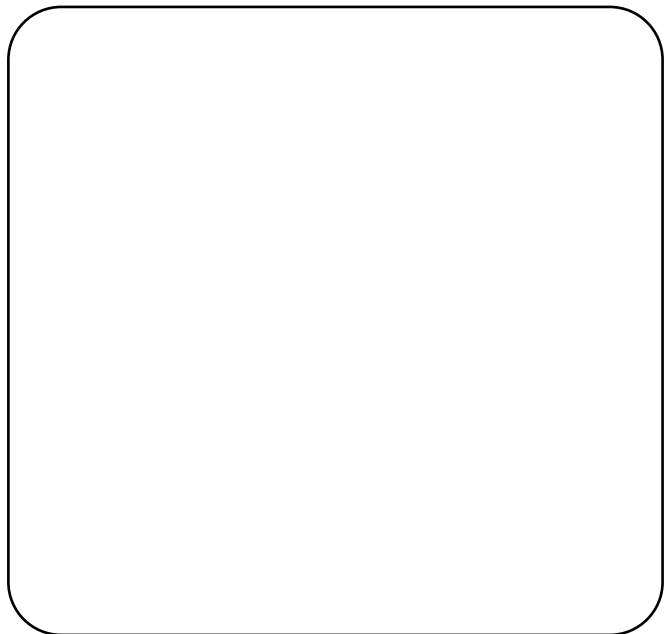
Animal cell:



Draw a plant cell under the light microscope. Label cell wall, cytoplasm, nucleus, vacuole, chloroplast, cell membrane



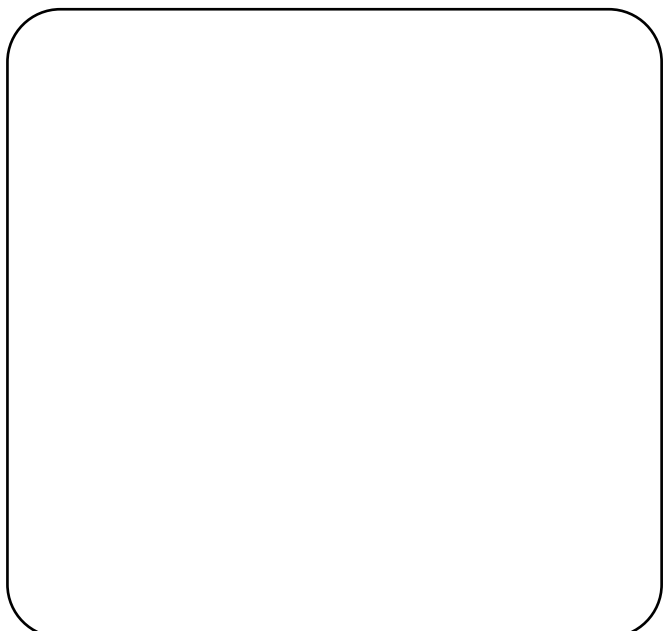
Draw the ultrastructure of an animal cell.



Draw an animal cell under the light microscope. Label cytoplasm, nucleus and cell membrane.



Draw the ultrastructure of a plant cell.



Give a function of the following organelles:

Cell membrane:

Mitochondrion:

Chloroplast:

Nucleus:

Nuclear pore:

Ribosome:

DNA:

What is a prokaryotic cell?

What is a eukaryotic cell?

Compare and contrast prokaryotic and eukaryotic cells.

- 1.
- 2.
- 3.
- 4.